



| RIDING THE WAVE

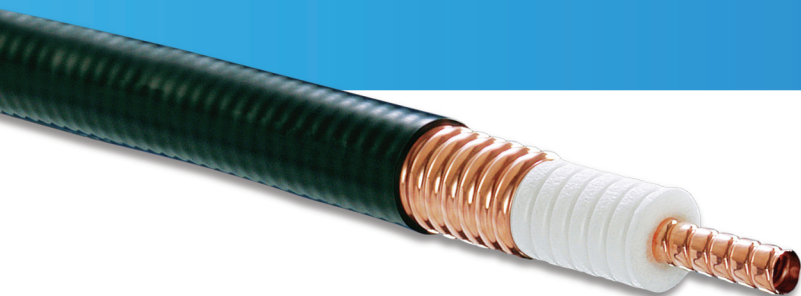
| BEAT THE HEAT

| BIG ON FEATURES. SMALL ON SPACE.



Accelerate your network's growth and capabilities with C-band Coaxial Solutions

CommScope's HELIAX AVA5 and AVA6 C-band coaxial feeder cables deliver all the performance and value of the legacy HELIAX AVA products, with one important difference:
Now, C-band has been enabled.



COMMSCOPE®

WELCOME TO COMS MEDIA!

COMS Media is a central hub bringing the telecommunications industry together with the latest updates, technology, and news!

We are dedicated to keeping you informed and connected in regards to the latest and greatest in telecommunications policy, advocacy, innovations, infrastructure, essential parts and equipment, and much more. Be sure to follow us as we bring you global infrastructure updates to US Big Tech news.

Please enjoy the content we have assembled and be sure to follow the QR Codes to link to our online information hub and to connect with essential vendors to keep your next project thriving.

We would like to extend a 'thank you' to our premier partner, Talley, Inc. and its network of leading telecommunications vendors for helping us make this launch possible, and we look forward to many more successful partnership opportunities in the future.



A Quarterly Publication

Company Message	3
Riding the Waves	4
Beat the Heat	6
Big on Features. Small on Space.	7
Online Ordering Made Easy	10
Microwave Backhaul Solutions	11
Smart as Paint	14
COMS Media Premier Partner	15

PREMIER PARTNER

TALLEY®

Phone:
800.949.7079

Text MSG:
562.210.0094

Email:
Sales@Talleycom.com

Fax:
800.530.8821

Talleycom.com

Hours:
Monday - Friday
7:00 am - 5:00 pm
Local Time

**Learn
More**



RIDING THE WAVES

Get Smart with Rooftop Antennas for Intelligent Transportation, Public Safety Fleets

In today's environment, public safety fleets depend on reliable, on-demand communications in their vehicles. And the development of Intelligent Transportation Systems (ITS) connecting even more vehicles requires the right mobile infrastructure.

Roof-mounted sharkfin antennas can help fleets navigate the sometimes-murky waters of mobile vehicle communications. Their compact size is ideal for police, utility vehicles, and fire trucks with ridged rooftops and limited space.

One such solution is Trooper™ Max antennas from PCTEL, a leading global provider of wireless technology for over 25 years.

The Trooper™ Max slender sharkfin antenna supports the high-speed requirements of complex RF communication systems used for public safety fleets and ITS. These antennas feature two 5G elements compatible with cellular routers

supporting 600 MHz to 6 GHz frequencies. The platform also incorporates two dual-band Wi-Fi antennas, with the option to add a UHF or a TETRA whip for LMR band coverage.

Designed to conform to contoured surfaces to seal out water or dust, the Trooper™ Max performs under severe environmental conditions, from freezing to very hot temperatures.

[View Product Information](#)

[Click Here](#)



Southwire®

THE EXPERIENCED AND TRUSTED CHOICE FOR TELECOM POWER

Southwire offers a wide range of telecom wire and cable products to meet your project's unique requirements. From our industry-recognized TelcoFlex® telecom power cables and our category cables, to accessories like our Southwire® Watteredge® busbars and flexible braids, to our line of Southwire VDV tools and QWIKtape™ pulling tape and QWIKline™ poly line, Southwire has you covered.

Visit Talleycom.com today to learn more!

©2022 Southwire Company, LLC. All Rights Reserved.

®Registered Trademark and ™ Trademark of Southwire Company, LLC.



Bird has grown into an industry-leading provider of RF communication products and calibration services to the semiconductor, public safety, broadcast, cellular, military, government, and medical markets.

[Learn More](#)



PCTEL enables wireless connectivity. Our brand stands for excellence and innovation in antenna systems, Industrial IoT devices and test and measurement solutions that meet the unique needs of our customers.

[Learn More](#)



BEAT THE HEAT

Securing Emergency Communications in High-Rise Buildings

When fighting a fire in a high-rise building, the last thing first responders need to worry about is being able to communicate with each other. But new construction, old construction and tight spaces – not to mention the fire itself – can interfere with communications.

When modifying or installing reliable emergency communications infrastructure in new buildings and retrofitting old buildings, how do you ensure that the systems will hold up under the heat and stress of a fire?

The backbone of a reliable system is fire-resistant coaxial cable built to survive the most extreme circumstances. Such cable enables cellular and public safety radio communications to and from all floors of a burning building.

Radio Frequency Systems, a manufacturer of wireless and broadcast infrastructure products, makes one such cable. DragonSkin™ fire-resistant coaxial cable has been tested and proven to work for two hours under temperatures up to 1,850 degrees F.

DragonSkin™ is the first UL-listed, stand-alone communications cable that meets NFPA-72, NFPA-1221 and NFPA-1225 survivability standards. Its smaller size and weight don't require any conduit or cable wrapping, and it can be bent to fit through tight spaces.

DragonSkin™ is the first and best performing standalone cable designed to provide uninterrupted communications and save lives of first responders in high-temperature and on-fire environments.

[Learn More](#)

[Click Here](#)

BIG ON FEATURES. SMALL ON SPACE.

Transtector Small Cell Cabinets Combine Functionality, Reliability and Space Savings

Transtector small cell power distribution cabinets meet the many demands of today's mission-critical applications, with a wealth of features and flexibility in a compact, durable package. With an innovative design, Transtector cabinets fit the requirements of virtually any small cell installation.

Compact Footprint

Limited space and local rules make a compact design a top priority. Small cell cabinets not only must make the use of minimal available space, they often must do so with reduced public visibility. Local governments and other jurisdictions often set detailed rules and building codes covering the aesthetics of small cell facilities, especially as the deployment of this technology becomes more widespread.

Transtector engineers small cell cabinets with as minimal a footprint as possible. A typical solution packs power, surge protection and both fiber optic and twisted pair connectivity into a cabinet that is 29 inches high, 14 inches wide and just 5 inches deep. Other Transtector small cell cabinets are even more compact: 12 x 8 x 4 and 10 x 5 x 4.

Flexible Configurations

Small cell/5G architectures vary significantly based on local market requirements, growing system loads, local codes, and whatever communication equipment is on site. Applications can include a wide range of potential wireless signal interfaces—GSM, CDMA, LTE, WiMAX, 3G, 4G, 5G and others. Protecting RF, AC, DC or data line circuits creates even more challenges.

Transtector SC-3MM100 Series enclosures allow you to specify circuit breaker values from a list of options based on specific requirements. Field-configurable fiber optic and twisted-pair connectivity eliminates costly downtime during commissioning. Other customizable options include a GFCI convenience outlet, field-configurable DIN rail branch breakers and more.

Safe, Reliable Operation

Safety and reliability are top priorities with every Transtector product. As an industry leader in reliability, Transtector engineers all small cell cabinets to the strictest standards so that your installations meet all requirements and codes. From NEMA standards for outdoor enclosures to UL safety standards for internal equipment, Transtector has you covered.

Rugged Construction

An outdoor cabinet simply must withstand the elements. With 16-gauge steel, a padlock hasp for security, and engineering that meets NEMA 3R standards, Transtector small cell cabinets ensure longterm reliability in any conditions. A gasket seal protects against rain, sleet and snow, and rugged construction safeguards internal equipment should ice form on the enclosure.

[View Product
Information](#)

[Click
Here](#)



Trooper™ Max 5G FR1 Antenna Platform

For Intelligent Transportation Systems (ITS) & Public Safety

Technologies

- Dual LTE
- Wi-Fi
- GPS L1/Galileo/Beidou
- UHF
- TETRA



PolyPhaser®
an INFINIT^e brand

*For more than four decades
PolyPhaser has worked to become
the Authority on Lightning and
Surge Protection.*

[Learn
More](#)



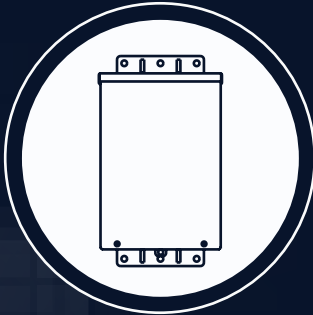
Microlab

Overcome your Public Safety
DAS Deployment Challenges

Microlab Public Safety portfolio of RF components share unique capabilities in the area of broadband frequency coverage from 80 to 2700 MHz, combined with minimal loss and very low PIM.



AC POWER PROTECTION CABINETS



SMALL CELL | 5G | DAS

EXTENSIVE LINE OF ENCLOSURES THAT
PROVIDE CONFIGURABILITY,
FLEXIBILITY AND DYNAMIC RELIABILITY
TO MANAGE SERVICE ENTRANCE DISCONNECT FUNCTIONALITY AND
MEET SITE REQUIREMENTS AND INDUSTRY STANDARDS.



*Sinclair products are used extensively
in public safety and private industry
communication networks, such as
emergency services (police, fire,
ambulance and military), transportation,
natural resources, and utilities.*

[Learn
More](#)



3M Heat Shrink Tubing



Authorized Distributor
Electrical Markets Solutions



ONLINE ORDERING MADE EASY

Talley's Website Makes Ordering A Breeze

Talley's online store makes it easy for you to shop on your computer and mobile devices. Explore Talley's diverse inventory and enjoy a stress-free shopping experience whether it's in the comfort of your home, office, or on the go!

With Talley's website you have:

- Access to 13,000+ products
- Real-time stocking availability
- Ability to track orders
- Potential to revise quotes
- Capacity to add multiple products with quick form
- And more!

Also, to make your experience even smoother, our live chat team is available to help you with all your questions, and yes, they are real people. So make sure to visit www.Talleycom.com to place your next order and enjoy a stress-free shopping experience.





MICROWAVE BACKHAUL SOLUTIONS

Count on CommScope for proven, practical microwave backhaul solutions

Backhaul is the backbone of the wireless network and demand for backhaul throughput continues to grow. Increased traffic is straining capacity and spectrum availability, with interlink interference becoming more common. Even a minor backhaul problem—signal interference, network disruption—can have a major impact on customer satisfaction.

To handle the increased demand and traffic, mobile operators are expanding their networks by increasing density with more cells in a given area, increasing capacity at existing sites, and expanding networks to provide service to those living in or traveling through remote “zero-coverage” areas.

Regardless of which strategy is followed, the cell sites must be connected to the rest of the network via backhaul—and microwave backhaul antennas offer the most cost-effective solution. Quick and inexpensive to deploy, microwave technology offers the capacity to connect individual or small numbers of aggregated sites back to the core fiber network.

Denser networks require many microwave links that must operate without interference, and must be able to reuse limited spectrum repeatedly.

Increased site capacity puts higher traffic demands on backhaul, with higher modulation schemes calling for high-performance antennas that offer protection from interference, and wider radio channels that make spectrum reuse essential.

Building new towers to expand coverage to remote communities is relatively easy; the issue is backhaul, and—since fiber deployment is cost-prohibitive in these areas—the only solution is microwave.

[View Product Information](#)

[Click
Here](#)

LMR[®]

Complete line of highly flexible low loss coaxial cables, with a variety of connectors easily assembled using LMR prep tools.

- Trusted
- Reliable
- The original
- Mission critical



T **TIMES**
MICROWAVE SYSTEMS
An Amphenol Company



Learn More About
Careers at Talley

TALLEY IS HIRING!

Interested in joining one of the nation's largest wireless distributors in the USA? Talley Inc. has many career opportunities available for growth and advancement with perks and benefits such as Medical, Dental, Vision, Profit Sharing, PTO and more. Talley is a great place to start, grow or continue your career in the evolving wireless industry.

POSITIONS AVAILABLE

- Regional Sales Manager
- Customer Service Agent
- And more...
- Inside Sales Support
- Warehouse

BENEFITS & PERKS

- Medical
- FMLA
- Sick Time
- Dental
- Life Insurance
- Personal Time
- Vision
- 401K
- Holiday Pay
- Long Term Disability
- Profit Sharing

Talleycom.com/careers



From the tradesman to the professional...

Tapes for Every Task.



Available in a wide variety of colors



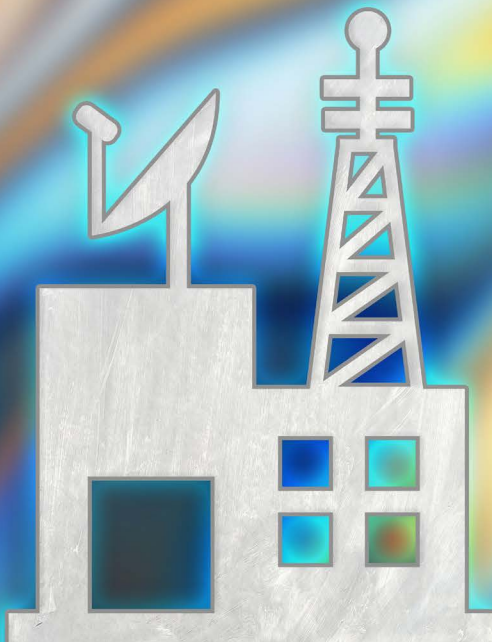
Laird External Antennas is now part of TE Connectivity. The same products and service are still available to our customers including:

- Antennas
- Mounts
- Cables
- Connectors

Learn More



Authorized Distributor
Electrical Markets Solutions



SMART AS PAINT

New Liquid Solutions to Eliminate PIM Interference and Improve Network Performance

This isn't about your favorite color of paint, but more so your favorite functional paint. PIM Shield® Paint & PIM Seal™ Caulk are new liquid RF barrier products from ConcealFab designed specifically for reducing external PIM at cell sites. These new materials create effective and reliable RF shields able to reduce energy arriving at covered PIM sources. Lab tests have demonstrated >30dB IM3 reduction on PIM sources covered with a single bead of PIM Seal™ Caulk or with two coats of PIM Shield® Paint.

The challenge with this product was not finding a conductive paint. EMI shielding paints are readily available that are designed to be painted on interior walls to provide shielding from cell phone towers, radio broadcasting antennas, etc. The challenge was finding a conductive paint that was also "stretchy" enough to not crack when used in outdoor environments. The existing paints that ConcealFab tested were relatively brittle and cracked easily when deployed in thick sections or when exposed to thermal cycling.

Small cracks may not be a problem when you are creating an EMI shield to block weak signals far away from a radio transmitter. Cracks are a problem, however, when trying to mitigate PIM near high power base station antennas. Cracks in conductive coatings create lightly touching metal to-metal surfaces that can become PIM sources. ConcealFab has seen cases where cracks in a conductive coating created worse PIM than the original PIM source we were trying to mitigate!

ConcealFab worked with industry experts to tackle the cracking problem and after years of codevelopment is now

able to offer highly elastic conductive coatings able to withstand harsh outdoor environments. An application note is available from ConcealFab that describes the extensive testing done to validate the RF as well as mechanical performance of these new materials.

PIM Shield® Paint can be applied by brush or roller to a wide variety of surfaces near base station antennas. PIM Seal™ Caulk is a thickened version of PIM Paint designed for filling small gaps and for direct application to metal interfaces on the antenna mounting frame. PIM Seal™ Caulk comes in 10.5 oz tubes and can be applied using a standard caulk gun. Surface preparation requirements as well as application information are provided on the product labels as well as in the technical datasheets.

While slathering everything on the antenna mounting frame with paint to eliminate PIM sounds tempting, operators should continue to replace "PIM Prone" cable support hardware with proven low PIM alternatives. ConcealFab's new liquid solutions should only be applied at locations that are difficult or expensive to mitigate using other methods. PIM Seal™ Caulk and PIM Shield® Paint are not magic solutions for solving all external PIM problems at cell sites. They are, however, important "tools in the tool bag" in the ongoing battle to cost effectively eliminate PIM interference and improve network performance.

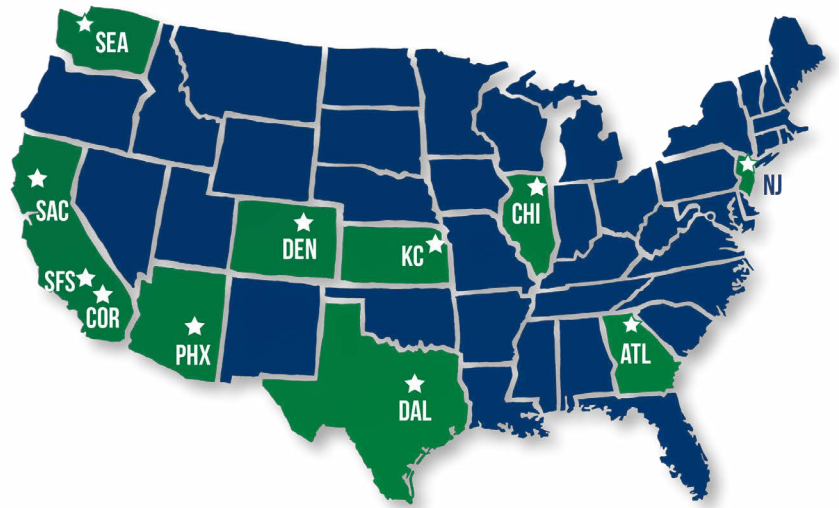
[View Product Information](#)

[Click Here](#)

COMS MEDIA PREMIER PARTNER



Talley Inc. is a premier distributor of Wireless Infrastructure, Communications and Mobile Products. Talley serves the needs of wireless communications professionals in a wide range of industries from Private and Public Safety networks to nationwide Cellular Carrier networks. With 11 strategically located facilities in the US and nearly four decades of experience, Talley is now one of the nation's largest wireless distributors in the industry. Talley services customers in several focused industry segments, stocking inventory from over 300 top suppliers that continue to support the demands of our evolving wireless network.



Our website provides instant access, expanded capabilities and increased connection to Talley's huge inventory of Wireless Infrastructure and Mobile Products. Everything Talley sells is at your fingertips even faster and more efficient than ever. Your next project is only a click away. Visit www.Talleycom.com today and see how we make shopping easy.

Our Online Features Include

- Live Chat
- Real Time Inventory
- Robust Search Capabilities
- Custom Favorites
- Real Time Shipping Estimates
- Order Tracking
- Access to Account Summary
- Access to Print Invoices
- RGA Request
- New Account Request

LET US HELP YOU WITH YOUR PROJECT TODAY!

- Outdoor Wireless Networks
- Indoor Wireless Networks
- Two-Way Land Mobile Radio
- Transport
- Control Systems

11 DISTRIBUTION FACILITIES

Atlanta

3100 Shawnee Industrial Way
Ste. 100
Suwanee, GA 30024
Phone: 678-318-5566

Chicago

2145 Internationale Pkwy.
Ste. 400
Woodridge, IL 60517
Phone: 630-410-8711

Corona

300 South Promenade
Corona, CA 92879
Phone: 800-949-7079

Dallas

500 Tittle Dr.
Ste. 300
Lewisville, TX 75056
Phone: 972-245-3100

Denver

14200 E. 33rd Place
Ste. A-1
Aurora, CO 80011
Phone: 720-305-4113

Kansas City

19935 W. 157th St.
Olathe, KS 66062
Phone: 913-390-8484

Los Angeles

12976 Sandoval St.
Santa Fe Springs, CA 90670
Phone: 562-906-8000

New York

160 Jony Dr.
Carlstadt, NJ 07072
Phone: 201-460-7501

Phoenix

3343 East Corona Ave.
Phoenix, AZ 85040
Phone: 602-353-8200

Sacramento

11288 Pyrites Way
Gold River, CA 95670
Phone: 916-273-1300

Seattle

22461 72nd Ave. South
Kent, WA 98032
Phone: 253-333-7100

Find Our Socials

- Talley Inc.
- Talley Inc.
- talleyinc
- talleyinc

TALLEY® VALUED PARTNERS

Talley offers a broad and comprehensive range of Wireless Infrastructure and Mobile product solutions. For further information on how Talley can help you with your communication requirements, contact one of our sales experts today.

